

GlobalTcert.com

GLOBALTCERT.COM
Your gateway to success



Demo
STUDY GUIDE

© Copy Right 1998-2005 GlobalTcert LLC. All Rights Reserved.

QUESTION 1

You create a Windows Form named GlobalitcerT Form. The form enables users to maintain database records in a table named GlobalitcerT .

You need to add several pairs of controls to GlobalitcerT Form. You must fulfill the following requirements:

- Each pair of controls must represent one column in the GlobalitcerT table.
- Each pair must consist of a TextBox control and a Label control.
- The LostFocus event of each TextBox control must call a procedure named UpdateDatabase.
- Additional forms similar to GlobalitcerT Form must be created for other tables in the database.
- Application performance must be optimized.
- The amount of necessary code must be minimized.

What should you do?

A. Create and select a TextBox control and a Label control.

Write the appropriate code in the LostFocus event of the TextBox control.

Repeatedly copy and paste the controls into GlobalitcerT Form until every column in the GlobalitcerT table has a pair of controls.

Repeat this process for the other forms.

B. Add a TextBox control and a Label controls to GlobalitcerT Form.

Write the appropriate code in the LostFocus event of the TextBox control.

Create a control array form the TextBox control and the Label control.

At run time, add additional pairs of controls to the control array until every column in the GlobalitcerT table has a pair of controls.

Repeat this process for the other forms.

C. Create a new user control that includes a TextBox control and a Label control.

Write the appropriate code in the LostFocus event of the TextBox control.

For each column in the GlobalitcerT table, add one instance of the user control to the GlobalitcerT Form. Repeat this process for the other forms.

D. Create a new ActiveX control that includes a TextBox control and a Label control.

For each column in the GlobalitcerT table, add one instance of the ActiveX control to GlobalitcerT Form. Repeat this process for the other forms.

Answer: C

Explanation: We combine multiple Windows Form controls into a single control, called user control. This is the most efficient solution to reuse functionality in this scenario.

Note: Sometimes, a single control does not contain all of the functionality you need. For instance, you might want a control that you can bind to a data source to display a first name, last name, and phone number, each in a separate TextBox. Although it is possible to implement this logic on the form itself, it might be more efficient to create a single control that contains multiple text boxes, especially if this configuration is needed in many different applications. Controls that contain multiple Windows Forms controls bound together as a single unit are called user controls.

Reference: 70-306/70-316 Training kit, Inheriting from UserControl, Page 345

Incorrect Answers

A: Only the controls, not the code of the control will be copied.

B: This is not the best solution. With a user control we could avoid writing code that are executed at run

time.

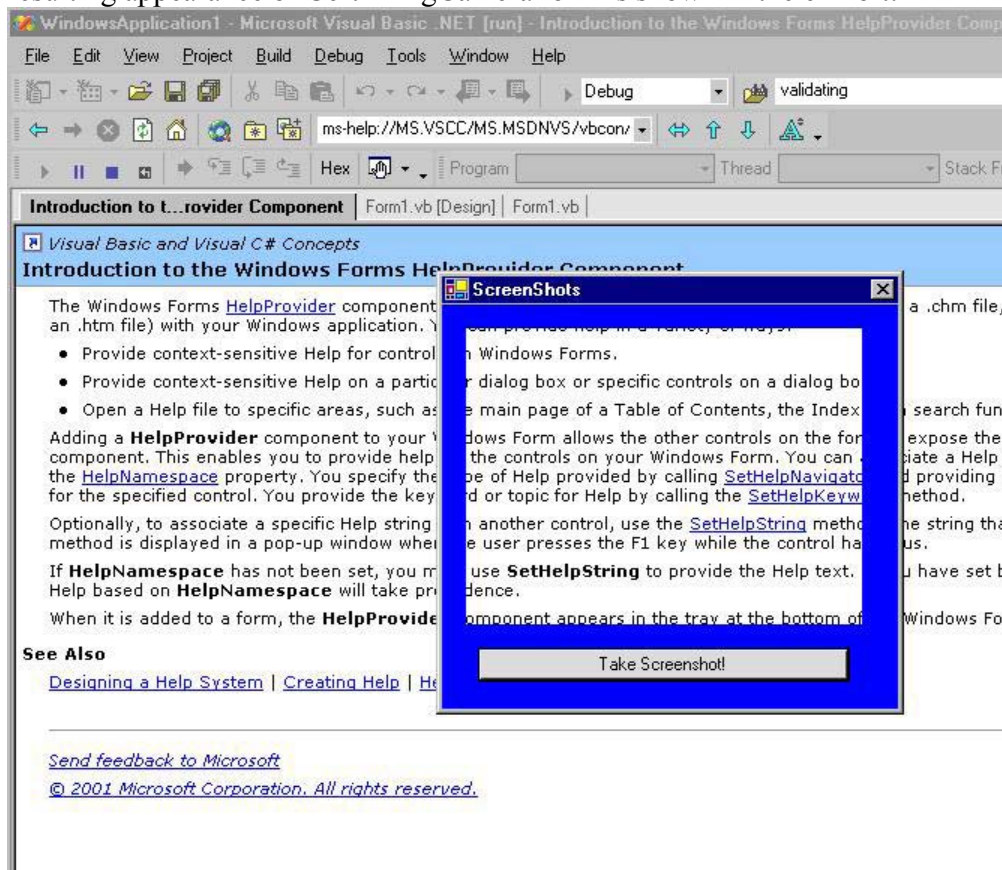
D: ActiveX controls should be avoided in Visual Studio .NET. They are less efficient.

QUESTION 2

You use Visual Studio .NET to create a Windows-based application. The application captures screen shots of a small portion of the visible screen.

You create a form named GlobalitcerT CameraForm. You set the GlobalitcerT CameraForm.BackColor property to Blue. You create a button on the form to enable users to take a screen shot.

Now, you need to create a transparent portion of GlobalitcerT CameraForm to frame a small portion of the screen. Your application will capture an image of the screen inside the transparent area. The resulting appearance of CertK ingCameraForm is shown in the exhibit:



You add a Panel control to GlobalitcerT CameraForm and name it transparentPanel. You must ensure that any underlying applications will be visible within the panel.

Which two actions should you take? (Each correct answer presents part of the solution. Choose two.)

- A. Set transparentPanel.BackColor to Red.
- B. Set transparentPanel.BackColor to Blue.
- C. Set transparentPanel.BackgroundImage to None.
- D. Set transparentPanel.Visible to False.
- E. Set GlobalitcerT CameraForm.Opacity to 0%.
- F. Set GlobalitcerT CameraForm.TransparencyKey to Red.
- G. Set GlobalitcerT CameraForm.TransparencyKey to Blue.

Answer: A, F

Explanation:

A: We set the Background color of the Panel to Red.

F: We then the transparency color of the Form to Red as well.

This will make only the Panel transparent, since the background color of the form is Blue.

QUESTION 3

You use Visual Studio .NET to create a Windows-based application. The application includes a form named GlobalitcerT Form.

GlobalitcerT Form contains 15 controls that enable users to set basic configuration options for the application.

You design these controls to dynamically adjust when users resize GlobalitcerT Form. The controls automatically update their size and position on the form as the form is resized. The initial size of the form should be 650 x 700 pixels.

If ConfigurationForm is resized to be smaller than 500 x 600 pixels, the controls will not be displayed correctly. You must ensure that users cannot resize ConfigurationForm to be smaller than 500 x 600 pixels.

Which two actions should you take to configure GlobalitcerT Form? (Each correct answer presents part of the solution. Choose two)

- A. Set the MinimumSize property to "500,600".
- B. Set the MinimumSize property to "650,700".
- C. Set the MinimizeBox property to True.
- D. Set the MaximumSize property to "500,600".
- E. Set the MaximumSize property to "650,700".
- F. Set the MaximizeBox property to True.
- G. Set the Size property to "500,600".
- H. Set the Size property to "650,700".

Answer: A, H

Explanation:

A: The Form.MinimumSize Property gets or sets the minimum size the form can be resized to. It should be set to "500, 600".

H: We use the size property to set the initial size of the form. The initial size should be set to "650, 700".

Reference:

.NET Framework Class Library, Form.MinimumSize Property [C#]

.NET Framework Class Library, Form.Size Property [C#]

Incorrect Answers

B: The initial size is 650 x 750. The minimal size should be set to "500,600".

C: The minimize button will be displayed, but it will not affect the size of the form.

D, E: There is no requirement to define a maximum size of the form.