

GlobalTcert.com

GLOBALTCERT.COM
Your gateway to success



Demo
STUDY GUIDE

© Copy Right 1998-2005 GlobalTcert LLC. All Rights Reserved.

Part-7

QUESTION 426

You are the network administrator for GlobalitcerT .com. The network consists of a single Active Directory Domain named GlobalitcerT .com. All servers run Windows server 2003. All user accounts are members of the Domain Users group.

You manage a server that is a member of the domain. Some administration tasks must be performed while you are logged on to the server. A new written security policy states that only specified users must be able to access the server by using Terminal Services. The written security policy also states that only administrators on the local server must be able to log on locally to the server.

The settings for the server are shown in the table exhibit.

You are a member of the Domain Admins global group. You attempt to perform maintenance tasks on the server, but you receive an error message stating that the local policy of the computer is preventing you from logging on locally.

You need to ensure that you can perform the maintenance tasks that are required for the serer. You also need to meet the requirements of the written security policy.

What should you do?

- A. Remove the Everyone group from the Access this computer from the network policy. Add the Domain Admins group to the Allow log on locally policy.
- B. Remove the Domain Users group from the Deny log on locally policy.
- C. Add the Administrators group to the Allow log on through Terminal Services policy.
- D. Add the Domain Admins group to the Allow log on through Terminal Services policy.

Answer: B

QUESTION 427

You are the administrator of a Windows Server 2003 computer named GlobalitcerT 3. GlobalitcerT 3 has Terminal Services installed. GlobalitcerT 3 connects to the Internet through a proxy server on the company network.

Help desk employees periodically access custom web applications on the company network. You install IIS on GlobalitcerT 3 with all the default settings.

You need to ensure that help desk employees can access Terminal Services on GlobalitcerT 3 from Internet Explorer 6.0.

What should you do?

- A. Uninstall IIS and Terminal Services. Reinstall IIS, and then reinstall Terminal Services.
- B. Configure the Internet Connection Firewall (ICF) to allow incoming ports 80 and 3389.

- C. Create a new virtual directory named Tsweb.
- D. Create a new web site named Tsweb.
- E. Install Remote Desktop Web Connection.

Answer: E

QUESTION 428

You are the network administrator for GlobalitcerT .com. You manage a server that runs Windows Server

2003. You use a client computer that runs Windows XP Professional to perform administrative tasks. The network was attacked recently, which prompts you to change the security settings on the server.

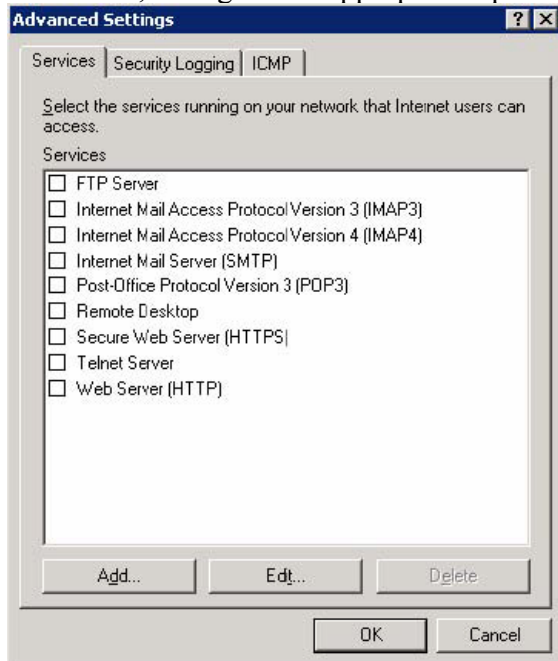
After you change the settings, you attempt to manage the server by using Remote Desktop. You attempt to connect to the server by using its IP address, but you cannot connect. The Remote Desktop client worked properly before you changed the security settings.

You verify that the server has network access and that you are a member of the local administrators group. You also confirm that Remote Desktop is enabled. You suspect that the Internet Connection Firewall is not configured correctly.

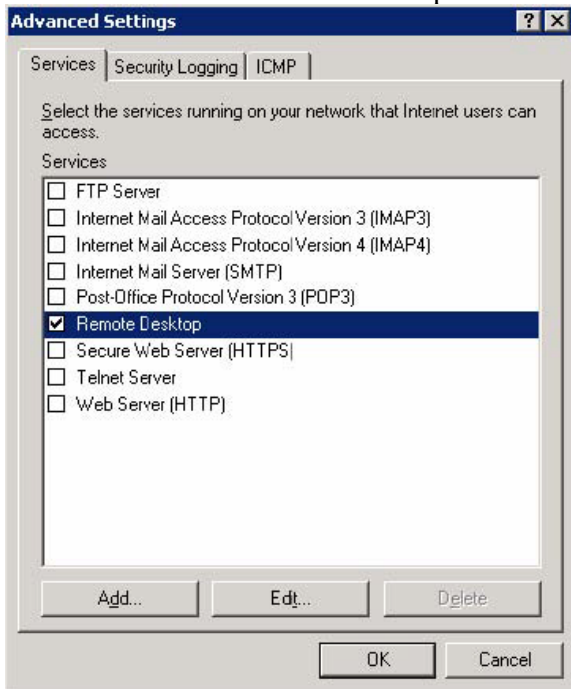
You need to maintain the highest possible level of security for the server. You also need ensure that Remote Desktop functions properly.

What should you do?

To answer, configure the appropriate option or options in the dialog box in the work area.



Answer: Tick the "Remote Desktop" checkbox.



QUESTION 429

You are the network administrator for GlobalitcerT .com. The network consists of a single Active Directory domain named GlobalitcerT .com. All domain controllers run Windows Server 2003.

A member server named GlobalitcerT 3 has IIS installed. GlobalitcerT 3 hosts all content for company web sites. The server is backed up on magnetic tape once each month.

To replace the web functionality of GlobalitcerT 3, the company acquires a new computer. You configure the computer as a member server named GlobalitcerT 4 and install IIS. You transfer all content from GlobalitcerT 3 to GlobalitcerT 4 and start the IIS service on GlobalitcerT 4.

You discover that GlobalitcerT 4 is not configured with the IIS settings that were defined on GlobalitcerT 3. You need to ensure that GlobalitcerT 4 has the same IIS settings that were defined on GlobalitcerT 3.

What should you do?

- A. Use the most recent backup tape of GlobalitcerT 3 to restore the System State data on GlobalitcerT 4.
- B. Use the most recent backup tape of GlobalitcerT 3 to restore C:\windows\system32\inetsrv\History on GlobalitcerT 4.
- C. Use IIS manager on GlobalitcerT 3 to select the Save Configuration to Disk option. Edit the files to replace system-specific information. Use the edited files to restore the IIS metabase on GlobalitcerT 4.
- D. Use IIS manager on GlobalitcerT 3 to select the Backup/Restore Configuration option. Edit the files to replace system-specific information. Use the edited files to restore the IIS metabase on GlobalitcerT 4.

Answer: D

QUESTION 430

You are the network administrator for GlobalitcerT .com. All servers run Windows Server 2003. All client computers run Windows XP Professional.



Globalitcert.com

Another Systems Administrator recently installed Software Update Services (SUS) on a server on the network. You need to troubleshoot a problem that involves SUS. You need to view the SUS approval log to verify that the latest updates are available to client computers. What should you do?

- A. Open the most recent IIS log file on the SUS server. View the data in the log file.
- B. Open the Hotfixes.txt file on the SUS server. View the data in the Hotfixes.txt file.
- C. Run the `wmic qfe > Approval.txt` command on the SUS server. View the data in Approval.txt file
- D. Open the file named History-Approve.xml on the SUS server. View the data in the log file.

Answer: D

QUESTION 431

You are the network administrator for GlobalitcerT .com. The network consists of a single Active Directory domain named GlobalitcerT .com. All domain controllers run Windows Server 2003, and each one has a locally attached tape device.

You need to back up each domain controller. Your backup process must fulfil the following requirements:

System recovery must be possible in the event of server failure.

The system configuration and all current dynamic disk configurations must be backed up.

Other data partitions do not need to be backed up.

What should you do?

- A. Use the Backup utility to back up the system files and to create an Automated System Recovery (ASR) disk.
- B. Use the Backup utility to back up the contents of all mounted drives.
- C. Use the Backup utility to back up only the System State data.
- D. Use the Copy command to copy C:\windows and its subfolders to a shared folder on the network.
- E. Use the Xcopy command to copy C:\windows and its subfolders to a shared folder on the network.

Answer: A