

GlobalTcert.com

GLOBALTCERT.COM
Your gateway to success



Demo
STUDY GUIDE

© Copy Right 1998-2005 GlobalTcert LLC. All Rights Reserved.

Topic 5: Configuring, Securing, and Troubleshooting Remote Access

Section 1: Configure and troubleshoot remote access and virtual private network (VPN) connections (2 questions)

QUESTION 1

You are the system administrator for GlobalitcerT s branch office. The companys network consists of a single Windows 2000 Active Directory domain. The network contains a Windows 2000 Server computer named GlobalitcerT Srv. GlobalitcerT Srv has Routing and Remote Access installed. GlobalitcerT Srv is configured to accept PPTP connections.

Some employees are allowed to connect to GlobalitcerT Srv from their home computers by using a virtual private network (VPN) connection. The employee's home computers run Windows 2000 Professional. The employees use a dial-up connection through an Internet service provider (ISP) to access the Internet. Employees report that their attempts to access GlobalitcerT Srv by using A VPN connection are not always successful. When the employees open Internet Explorer before they make their VPN connection, they can successfully connect to GlobalitcerT Srv. However, when employees attempt to access GlobalitcerT Srv before they open Internet Explorer, their VPN connection to GlobalitcerT Srv fails.

You need to ensure that employees can connect to GlobalitcerT Srv by using a VPN connection without first opening Internet Explorer. What should you do?

- A. Configure all home computers to use Internet Connection Sharing for the modem that connects to the ISP.
- B. Configure all home computers so that the VPN connection first connects to the Internet by using a dialup connection.
- C. Configure all home computers to that the VPN connection automatically uses the employees' Windows user logon names and passwords for authentication.
- D. Configure the Internet Explorer options on all home computers so that GlobalitcerT Srv's IP address is not included in the Restricted sites zone.

Answer: B

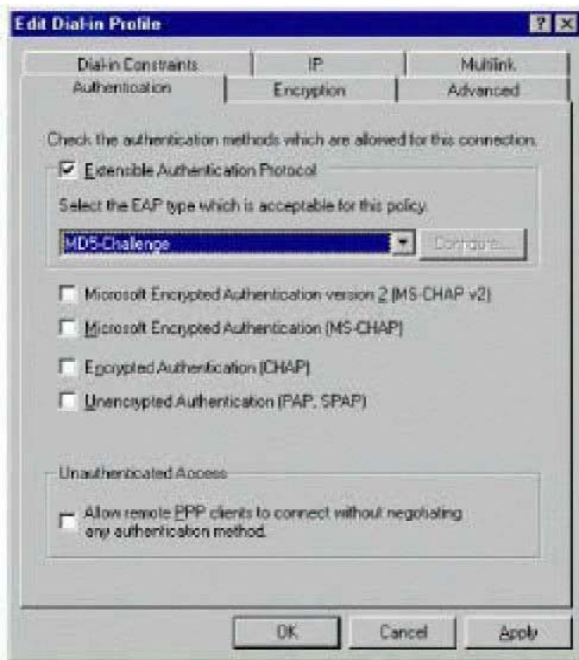
Explanation: The VPN connection needs the Internet connection to be able to establish a VPN tunnel. We should therefore configure VPN to connect to Internet by using a dial-up connection.

Incorrect Answers

- A: ICS is useless in this scenario.
- C: This is not an authentication problem.
- D: This is not a security problem.

QUESTION 2

You are the system administrator for GlobalitcerT 's network. The network contains a Windows 2000 Server computer named GlobalitcerT 1. GlobalitcerT 1 has Routing and Remote Access installed. GlobalitcerT 1 is configured to accept PPTP connections and to accept the authentication protocol shown in the exhibit.



Users in the sales department use portable computers that run either Windows 98 or Windows 2000 Professional. These users occasionally work from home. They need to be able to connect to the company network by using virtual private network (VPN) connection.

The users in the sales department who have Windows 98 computers report that they cannot connect to GlobalitcerT 1 by using a VPN connection from here. The users who have Windows 2000 Professional computers can successfully connect to GlobalitcerT 1 by using a VPN connection from home.

You need to ensure that all users in the sales department can connect to GlobalitcerT 1 by using a VPN connection. You need to ensure that all portable computer VPN connections use the most secure authentication possible.

What should you do?

- A. Configure GlobalitcerT 1 to also use MS-CHAP.
- B. Configure GlobalitcerT 1 to also use MS-CHAP v2.
- C. Clear the Extensible Authentication Protocol check box on GlobalitcerT 1. Configure GlobalitcerT 1 to use MS-CHAP v2 and MS-CHAP.
- D. Clear the Extensible Authentication Protocol check box on GlobalitcerT 1. Configure GlobalitcerT 1 to use MS-CHAP v2 and CHAP.

Answer: A

Explanation: Windows 98 does not support EAP. Windows 98 supports MS-CHAP, and with Service Pack 1 or later Windows 98 supports MS-CHAP v2 as well. For highest security we should therefore enable MSCHAP. Incorrect Answers

B: Windows 98 clients cannot, without Service Pack 1 or later, use MS-CHAP V2 authentication. We must therefore include the MS-CHAP authentication protocol.

C: There is no need to deactivate EAP. It can still be used by the Windows 2000 client computers. The RRAS server will enable the clients to first use EAP, and if that fails, it will allow the clients to use MS-CHAP.

D: There is no need to deactivate EAP. It can still be used by the Windows 2000 client computers.

Furthermore, CHAP is insecure since it uses plaintext passwords.

Subsection, Configure and troubleshoot client-to-server PPTP and L2TP connections (1 question)

QUESTION 1

You are a domain administrator for GlobalitcerT . The network consists of a single Active Directory domain. The network contains 10 Windows 2000 Server computers and 200 Windows 2000 Professional computers. A server named ServerA has routing and remote access installed and is configured for incoming dial-up connections.

Five employees will be traveling overseas. They need to be able to dial in to ServerA while they are traveling. The employees will be using Windows 2000 Professional portable computers to dial in to the network.

You need to ensure that the dial-in connections on the portable computers are as secure as possible.

Which three actions should you take? (Each correct answer presents part of the solution. Choose three)

- A. Configure ServerA to require EAP-CHAP authentication.
- B. Configure ServerA to require MS-CHAP v2 authentication.
- C. Configure ServerA to require L2TP connections for all dial-in users.
- D. Configure ServerA to require Microsoft Point-to-Point Encryption (MPPE) for all dial-in users.
- E. Install a server encryption certificate on ServerA and enable IPsec.
- F. Install an encryption certificate on all client computers and enable IPsec.

Answer: C, E, F

Explanation: We enable IPsec and create certificates at both the server and the clients. Then we configure the Server for L2TP. L2TP is required for IPsec.

Incorrect answers:

- A: There is a protocol EAP-CHAP, but Windows 2000 doesn't support it. Windows 2000 supports EAP-TLS.
- B, D: MS-CHAPV2 with MPPE encryption is also secure. It is the next best solution.

Subsection, Manage existing server-to-server PPTP and L2TP connections (0 questions)

Subsection, Configure and verify the security of a VPN connection (0 questions)

Subsection, Configure client computer remote access properties (0 questions)

Subsection, Configure remote access name resolution and IP address allocation (0 questions)

Section 2: Troubleshoot a remote access policy.

Subsection, Diagnose problems with remote access policy priority (0 questions)

Subsection, Diagnose remote access policy problems caused by user account group membership and nested groups (0 questions)

Subsection, Create and configure remote access policies and profiles (5 questions)

QUESTION 1

You are a domain administrator for GlobalitcerT . The network consists of a single Active Directory domain. The network contains 15 Windows 2000 Server computers and 150 Windows 2000 Professional computers. A server named ServerA has Routing and Remote Access Installed and is configured for