

# GlobalITcert

## GlobalITcert

Certification Practice Exam Study Guide

Demo



Certification Study Guide

## **License Agreement**

GlobalITcert declares a single-user license for GlobalITcert series products, which means it can ONLY be used by yourself for educational purposes.

This material is protected by copyright law and international treaties. Unauthorized reproduction or distribution of this material, or any portion thereof, may result in severe civil and criminal penalties, and will be prosecuted to the maximum extent possible under law.

Copyright 1998-2006, GlobalITcert.com, All Rights Reserved.

<http://www.GlobalITcert.com>

**QUESTION 1**

What methodology regulates network media access on an 802.3u compliant LAN?

- A. HCS
- B. VG 100
- C. CSMA/CD
- D. Token passing

Answer: B

---

**QUESTION 2**

A network administrator needs to create 12 subnets. What is the minimum number of bits required to create the 12 subnets?

- A. 3 bits
- B. 4 bits
- C. 5 bits
- D. 12 bits

Answer: B

---

**QUESTION 3**

Select the link state routing protocol. (Choose two).

- A. RIP
- B. LAT
- C. SNA
- D. NLSP
- E. RTMP
- F. OSPF

Answer: D, F

---

**QUESTION 4**

What element of an IPX address determines the packet's service destination within a given network device?

- A. Subnet mask
- B. Node address
- C. Socket number
- D. Network
- E. Network address
- F. Internet network address

Answer: C

---

**QUESTION 5**

Which IPX network addresses are reserved for special purposes? (Choose Three)

- A. 00000000
- B. 11111111
- C. FFFFFFFE
- D. AAAAAAAA

E. AAAA0000

Answer: A, B, C

---

**QUESTION 6**

A network uses a subnet mask of 255.255.248.0 it receives host addresses contains all "1's". How many host addresses are available for each subnet?

- A. 255
- B. 512
- C. 1023
- D. 2047

Answer: D

---

**QUESTION 7**

Which elements form an IPX address used for internetwork communication? (Choose Three).

- A. Subnet mask
- B. Node address
- C. Socket number
- D. Network address

Answer: B, C, D

---

**QUESTION 8**

What is the maximum segment length allowed in a 100BASE-TX LAN?

- A. 100 meters
- B. 412 meters
- C. 1000 meters
- D. 10,000 meters

Answer: A

---

**QUESTION 9**

If a node has an IP address of 144.156.87.98, on which class of network is the node located?

- A. A
- B. B
- C. C
- D. D
- E. E

Answer: B

---

**QUESTION 10**

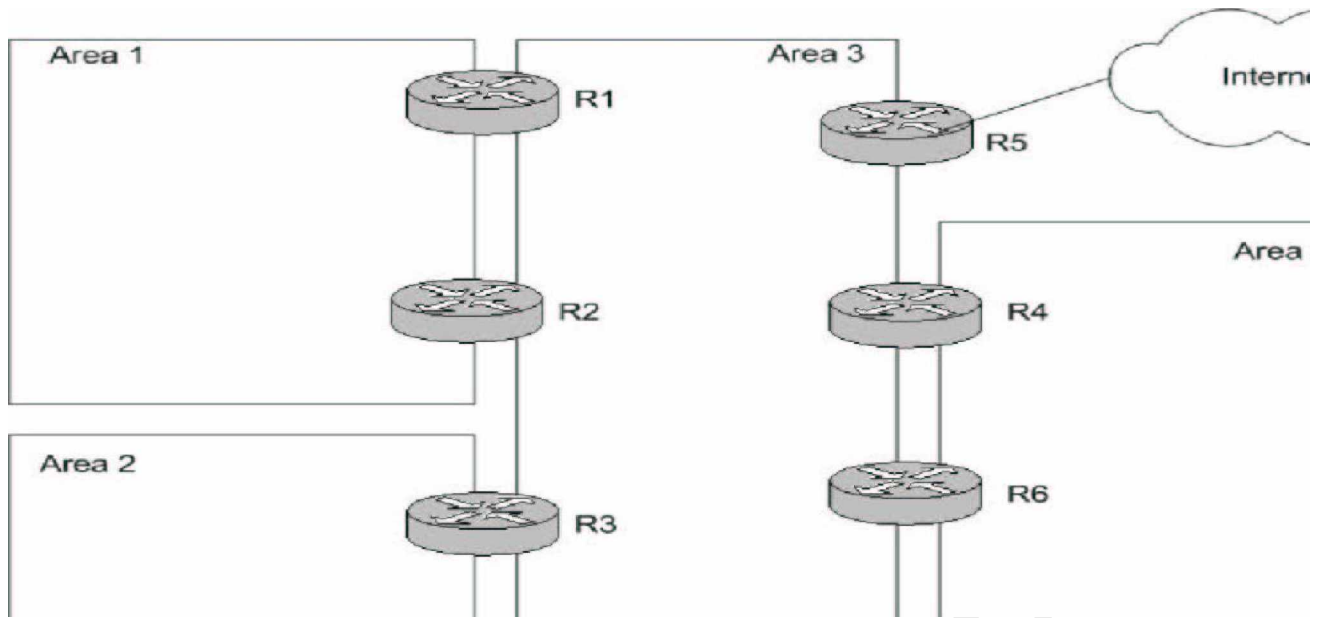
Super netting requires a minimum of how many consecutive IP network addresses?

Answer: 2

---

**QUESTION 11**

Exhibit



Given that the internetwork in the exhibit uses OSPF routing, what router is the ASBR?

- A. R1
- B. R2
- C. R3
- D. R4
- E. R5
- F. R6

Answer: E

**QUESTION 12**

Which features are associated with link state routing? (Choose two).

- A. Counts hops
- B. Converges quickly
- C. Uses a cost metric
- D. Requires very little configuration
- E. Recalculates entire routing database before forwarding changes

Answer: B, D